

Fragments Meet Chroma

Binaries, 2021

DOUG THOMAS | ELIZABETH MIKELLIDES

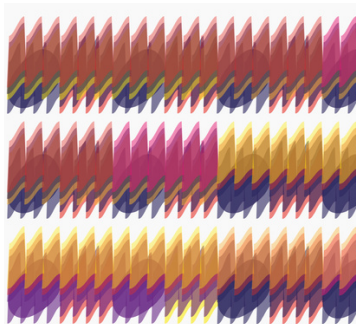
Citizens Art London Gallery

Blue House Yard, Station Road, N22 7TB, London

Wednesday 12 - Wednesday 19 October 2022

*Private View Wed 12 6-8pm / reservations on eventbrite

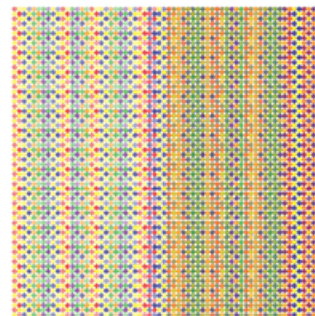
Translating and transposing music into the realm of colour



Detail after Fragment 24, Mehldau, 2021
Digital chroma drawing



After Fragment 15, Escher 2021
Digital chroma drawing



After Fragment 7, Pointillisme, 2021
Digital chroma drawing

**"Love this!! - the fine finials to the shapes and frenetic repeats are exciting!!
I particularly like the sense of movement and slight visual glitch/blur you have
imparted in this piece - perfect for the music."**

- Jeremy Morgan

**"I've dived into Doug's and your worlds of colours, shapes and sounds and could
hardly come back to the 'normal' world'.**

- Selma Dronkers

Fragments Meet Chroma brings together musical pieces by composer Doug Thomas, who calls these works 'fragments' with the visual pieces by artist Elizabeth Mikellides, whose practise involves drawing music and as such attributes to the 'chroma' element in this show.

French-British composer Doug Thomas founded NOOX (North of Oxford St.) a record label, production company, and recording studio in 2014 and has released numerous solo projects such as the triptych *Angles*, *Cassiopeia* and *Shapes*, *The Seasons*, *Tension/Release*, and many other series of recordings. Doug is also a writer, publishing articles, interviews, and reviews, and is a contributor for *Interlude* as well as a guest writer on *The Cross-Eyed Pianist* and *Art Muse London*.

“Art and Music bring light into our world and breathe life into my work.”

- Elizabeth Mikellides

British Greek Cypriot conceptual artist, Elizabeth Mikellides works with music scores to discover and illuminate their constructs. Her love of structure, order and layering developed while receiving Classical training in piano, and she went on to merge both music and art during her BA in Drawing at Camberwell College of Art, followed by an MA at the Slade. Elizabeth’s work can be interpreted as a graphic score or visual music, which is why she refers to her practice as ‘Drawing Music’.

Doug’s ‘Fragments’ is a project finalised in 2020. It represents a compendium of miniature keyboard pieces, with some started as early as 2015. Fragments takes its originality in (i) its duality between a range of electric and acoustic keyboards and (ii) its productive nature; indeed, it has been produced using Spitfire’s free software instruments only and sequenced on a laptop. It is therefore a fully virtual project. Similarly, Elizabeth produces much of her music translations digitally, so the Chroma equivalents to Fragments have also been produced digitally, in Illustrator.

With both fragments and chroma pieces being digital, this body of work debuted in February this year as an online show and was well received. This physical exhibition has long been awaited for then and will see a selection of the 24 digital drawings come to life as they are printed on a metal surface called chromaluxe.

Bring your headphones for the ultimate listening experience as **Fragments Meet Chroma** will take you on a polychromatic journey for both your ears and eyes!

Contact Details:

Artist Elizabeth Mikellides

elizabeth.mikellides@gmail.com

www.elizabethmikellides.art

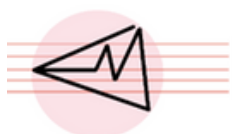
Instagram: @elizabethmikellides

Musician Doug Thomas

info@doughthomas.co.uk

www.doughthomas.co.uk

Instagram: @doughthomasofficial



The Guild of International Songwriters & Composers